

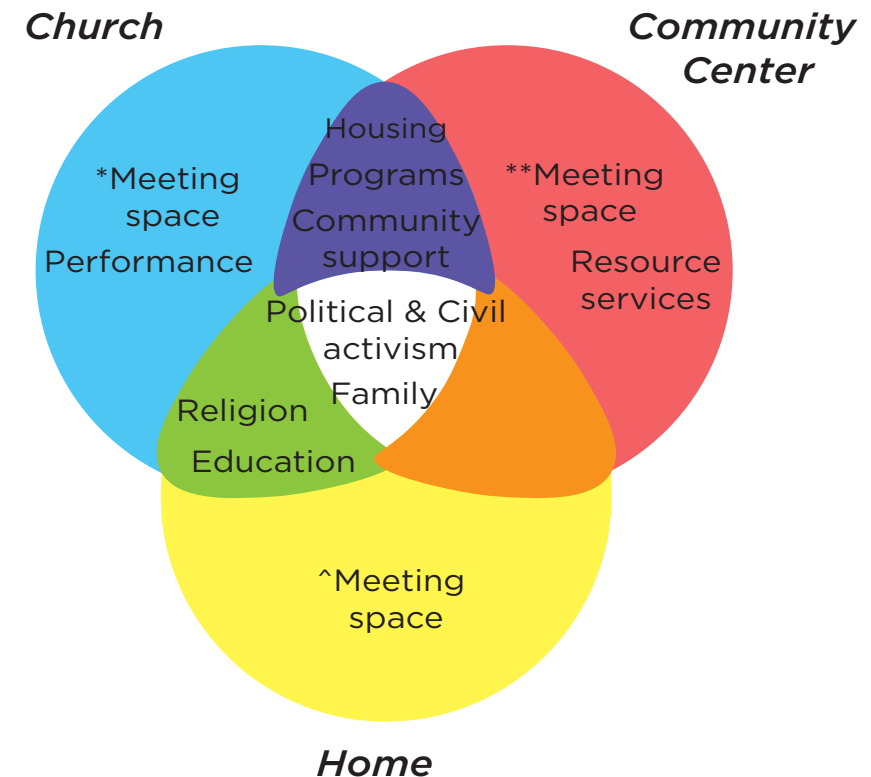


# **Anti-displacement Intervention Proposal**

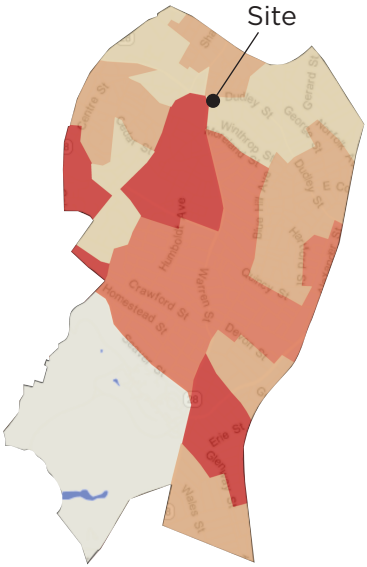
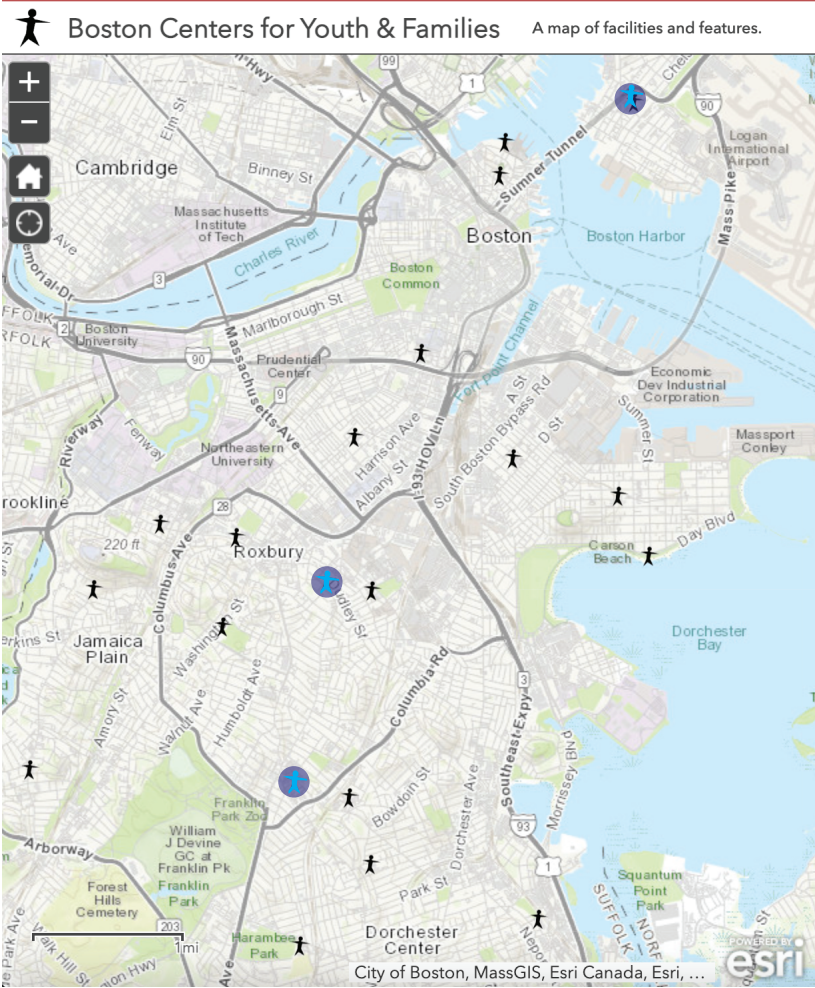
Site: Zion Fire Holiness Church of God

# Concept...

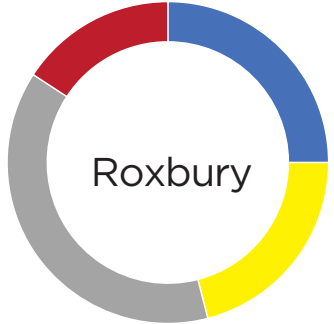
During the 1800s many different populations of black people from the South, West Indies, and Canada migrated to Boston. Before being able to settle on their own space to worship in Beacon Hill, services started in the home. At the turn of the 20th century a mass migration to Roxbury took place. No longer forced to constantly relocate, the churches established roots and were able to provide the essential services to the community that would later be provided by community centers as well.



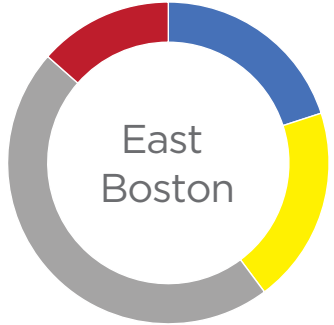
# Site Selection: Site Context



60-80+



■ 0-17 ■ 18-29 ■ 30-59 ■ 60-80+



Despite the amount of residents in this age demographic, they do not have a dedicated space

Boston Centers for Youth & Families  
<https://boston.maps.arcgis.com/>

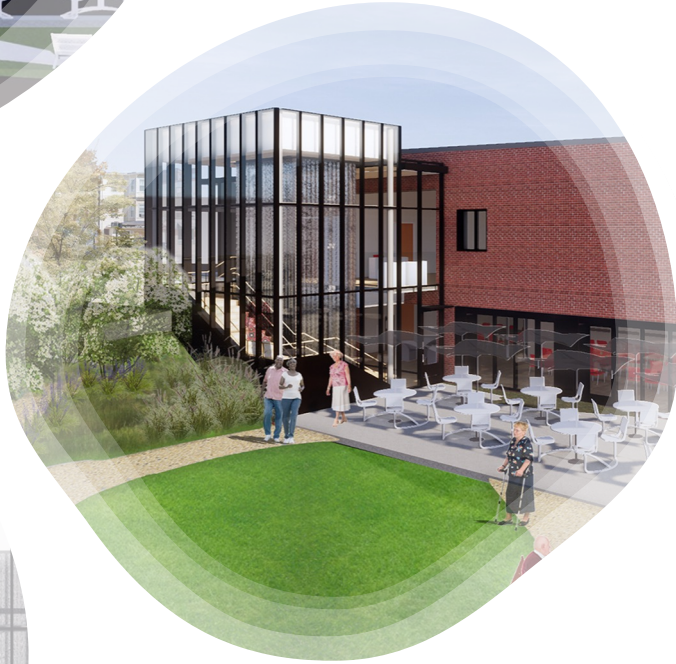
Map of Age Cohorts by Tract in  
 Roxbury via Statistical Atlas

# Site Selection: Site Context



# Case Studies

Community Center Typologies



## Renovation & Addition: East Boston Senior Center

- Spaces
  - community room
  - kitchen
  - fitness area
  - Universally accessible green space
- Programs
  - TBD



# Renovation Design: BCYF Vine Street

- Spaces
  - community room
  - Gym
  - dance studio
  - fitness center
  - computer lab
- Programs
  - Sewing programs
  - Daycare



# Inhabit Space: ABCD Parker Hill Fenway

- Programs
  - Civil classes
  - Tax assistance
  - Technology services
- Programs
  - Food services
  - ESOL
  - Youth engaged in action





# Proposed Intervention

Senior center

An architectural rendering of a two-story building with a classical facade. The building features three large, arched windows filled with vibrant, multi-colored stained glass. The ground floor has a central entrance with a small set of steps and a ramp leading to it. A traffic light and a sign that says "Events" are visible on the street corner. Silhouettes of people are shown on the sidewalk, including a person using a wheelchair and a person with a cane. The overall scene is presented in a semi-transparent, faded style.

# *Envision...*

- Exterior Intervention
  - Brighten and rearrange mosaic windows
- Accessibility
  - Ramp addition
  - Widen sidewalk
  - Add seating area
- Collaborative Intervention
  - Senior enter garden
  - Mural Interaction

# Programming Space



## Interior Intervention

- Fitness/ wellness room
- Legal aid & Medical aid
- Educational classes
- Arts and Dance

## Cross Generational Program

- Partner with youth centers nearby for community service projects
- Listening sessions