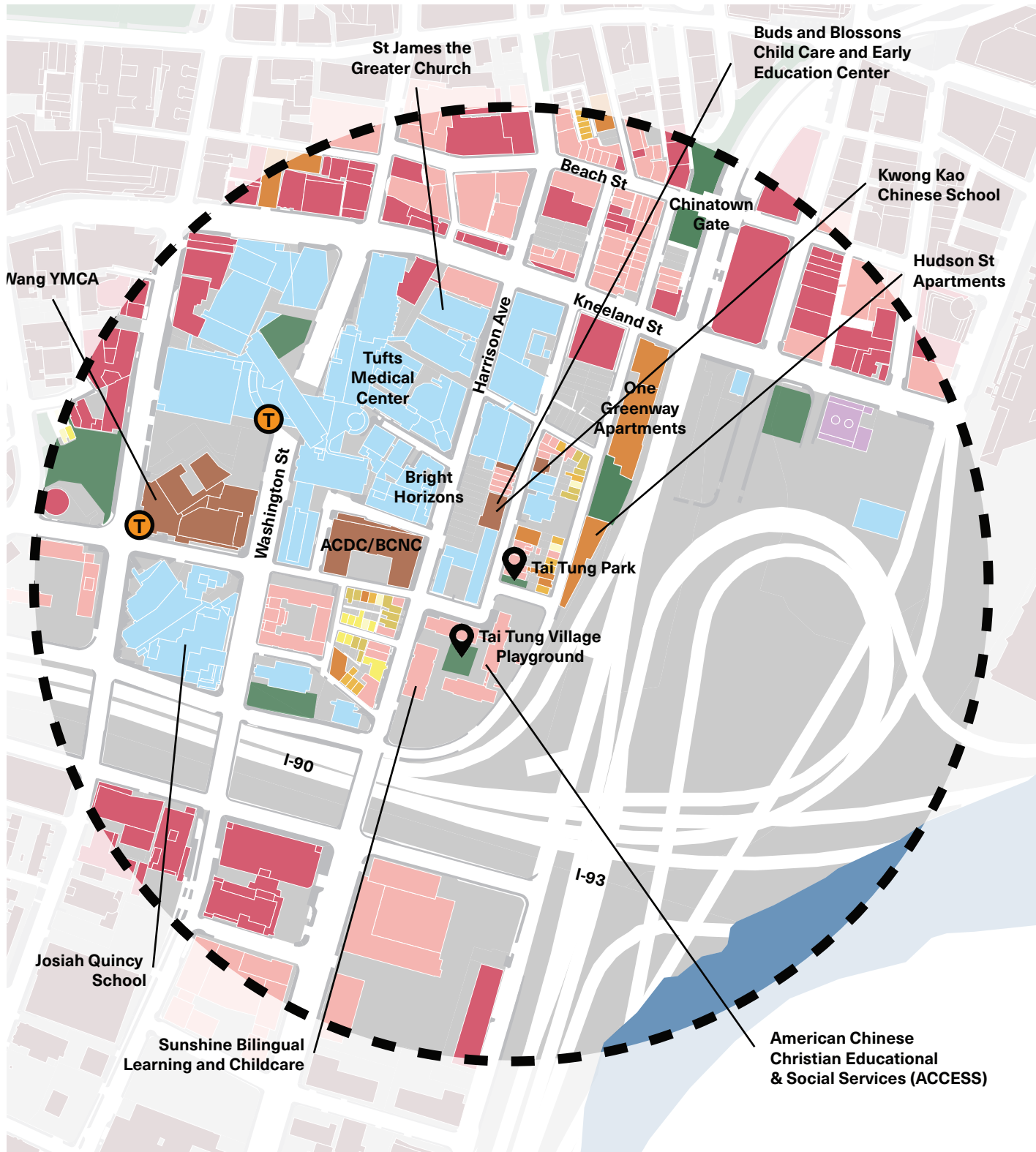


# Tai Tung Village Playground & Park

236 Harrison Ave & 110 Tyler St

Tai Tung Village Playground lies at the center of the larger apartment complex, Tai Tung Village. The complex consists of 214 units across four separate buildings. All the buildings have ground-level commercial businesses and residential access. The open space consists of two distinct play areas. Because the space is a part of the apartment complex, the playground is private property that primarily services the residents and the childcare service attached to the building.

Tai Tung Park is a small 0.03 acre playground area open to the public. The city-owned park contains small play structures meant for children two to five years of age.



## Map Key

### Land Use:

- |   |  |
|---|--|
| <span style="display: inline-block; width: 15px; height: 15px; background-color: #f08080; border: 1px solid black;"></span> Mixed Use     | <span style="display: inline-block; width: 15px; height: 15px; background-color: #ffff00; border: 1px solid black;"></span> Two Family   |
| <span style="display: inline-block; width: 15px; height: 15px; background-color: #dc143c; border: 1px solid black;"></span> Commercial    | <span style="display: inline-block; width: 15px; height: 15px; background-color: #c0c000; border: 1px solid black;"></span> Three Family |
| <span style="display: inline-block; width: 15px; height: 15px; background-color: #9370db; border: 1px solid black;"></span> Industrial    | <span style="display: inline-block; width: 15px; height: 15px; background-color: #e69a00; border: 1px solid black;"></span> 4-6 Unit     |
| <span style="display: inline-block; width: 15px; height: 15px; background-color: #add8e6; border: 1px solid black;"></span> Institutional | <span style="display: inline-block; width: 15px; height: 15px; background-color: #8b4513; border: 1px solid black;"></span> Apartment    |
| <span style="display: inline-block; width: 15px; height: 15px; background-color: #3cb371; border: 1px solid black;"></span> Government    | <span style="display: inline-block; width: 15px; height: 15px; background-color: #654321; border: 1px solid black;"></span> Condo        |
| <span style="display: inline-block; width: 15px; height: 15px; background-color: #ffff00; border: 1px solid black;"></span> Single Family |  |



# Site Photos

Tai Tung Village Playground





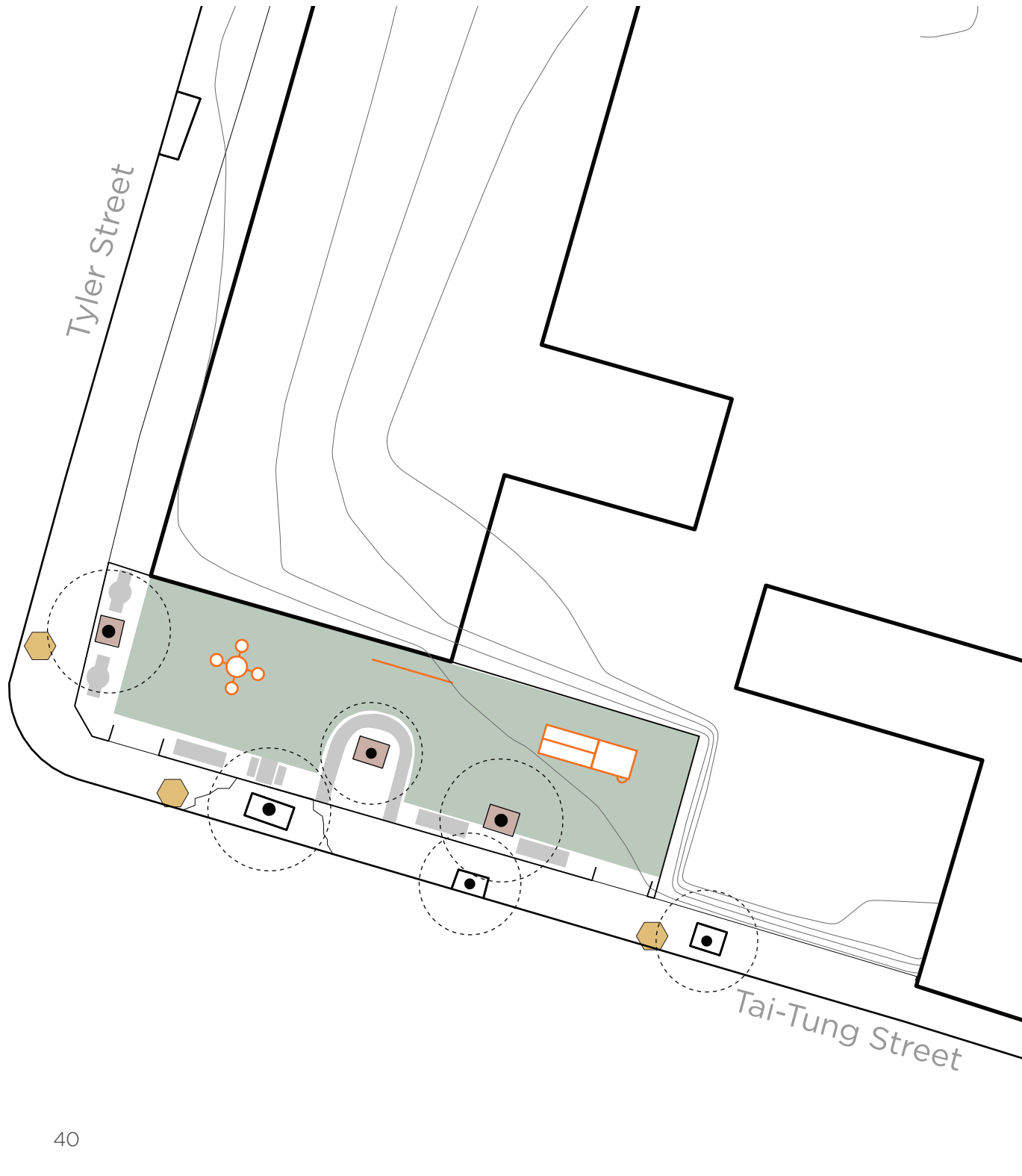
# Site Photos

Tai Tung Park



# Tai Tung Park

110 Tyler St  
Boston, MA



## Map Key

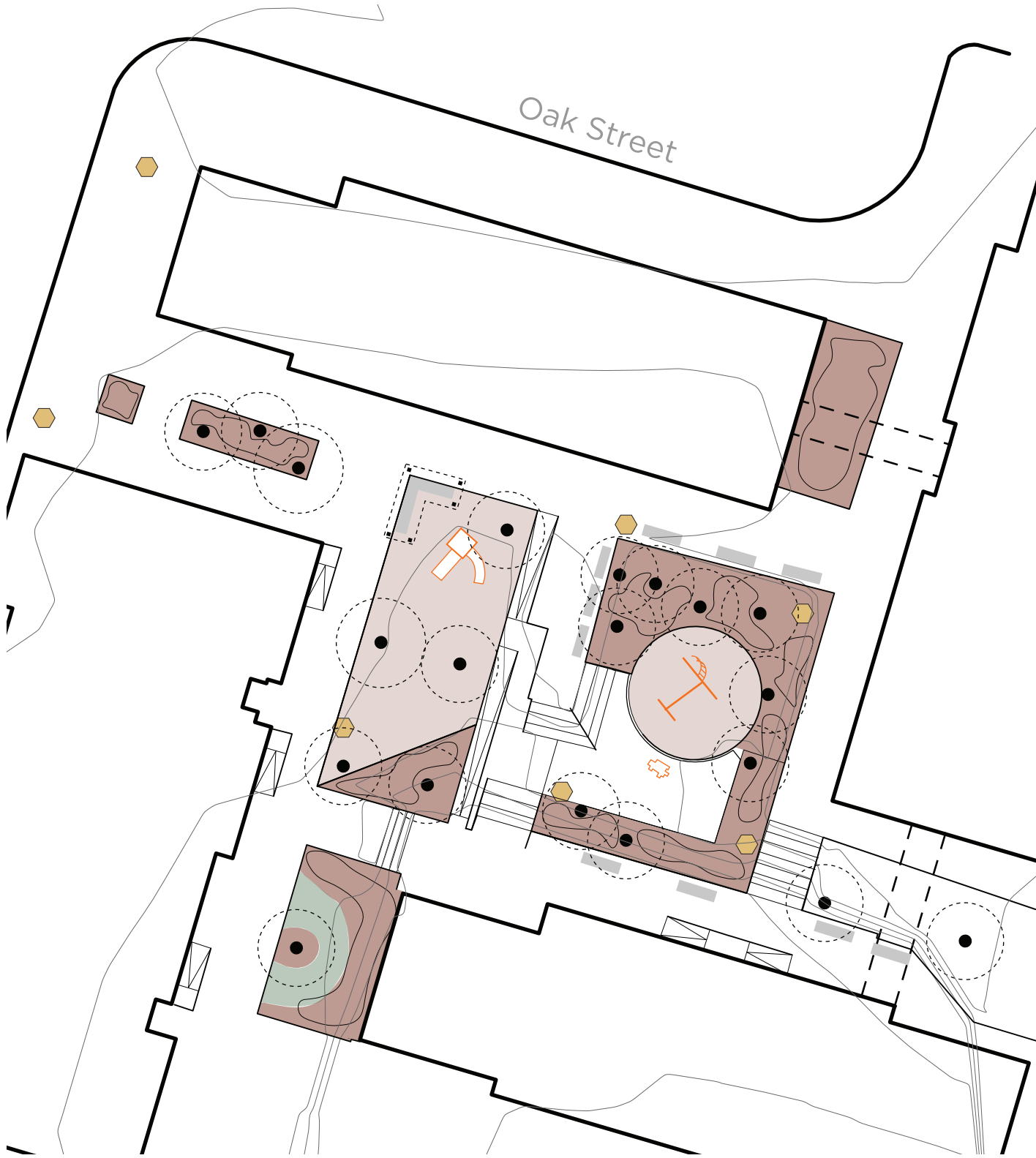
Scale: 1/16" = 1'

- |               |                      |
|---------------|----------------------|
| Bench         | Street Lamp          |
| Trashcan      | Shrubbery            |
| Amazon Locker | Residential Entrance |
| Turf          | Commercial Entrance  |
| Hardscape     | Tree                 |
| Mulch         | Playground           |



# Tai Tung Village Playground

236 Harrison Ave  
Boston, MA

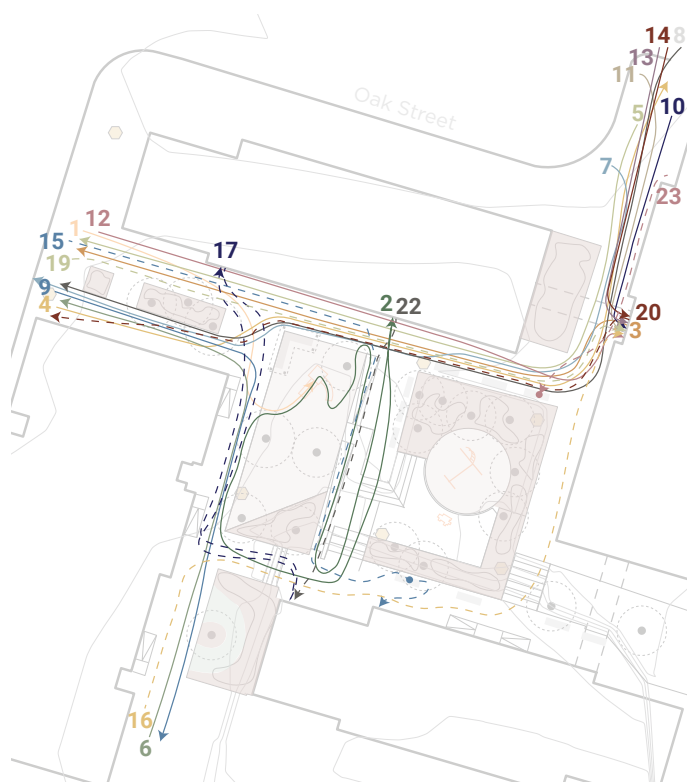


## Map Key

Scale: 1/32" = 1'

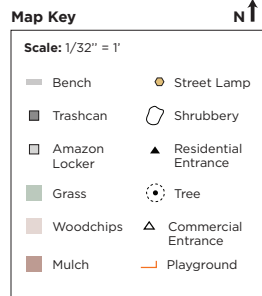
- |               |                      |
|---------------|----------------------|
| Bench         | Street Lamp          |
| Trashcan      | Shrubbery            |
| Amazon Locker | Residential Entrance |
| Grass         | Commercial Entrance  |
| Woodchips     | Tree                 |
| Mulch         | Playgroun 41         |





### Behavioral Map #1

Sunday, 11/5/23, 2:00-2:40pm  
57 Degrees (Sunny, Breezy)

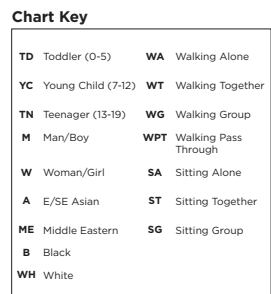


### Data Chart #1

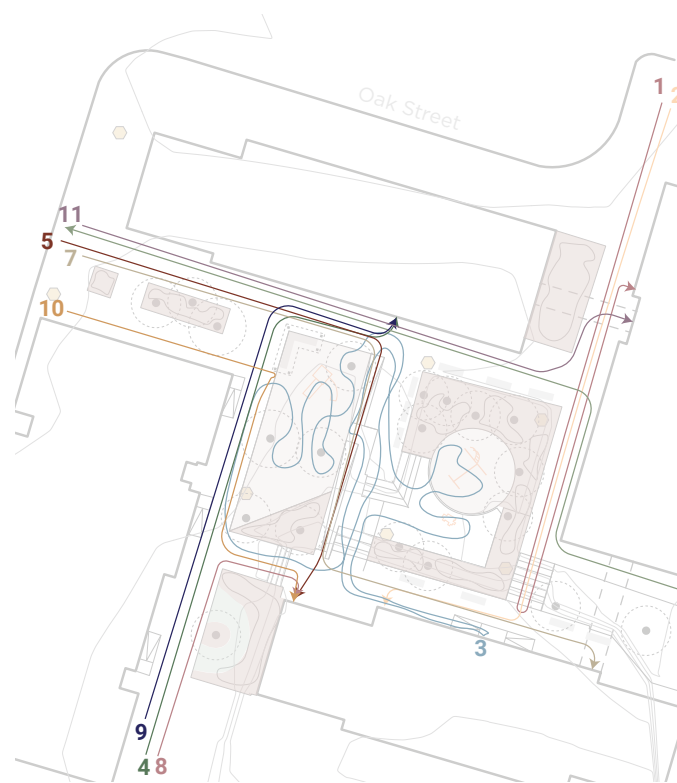
Tai Tung Village Playground

On Sunday, there were a total of 22 individuals that visited the open space. Of these people, 62% were perceived as women/girls and 38% were perceived as men/boys. The average perceived age amongst all the people were those between 60-69 years of age. On this day, 100% of the population that visited the park were perceived to be East/Southeast Asian. While the average amount of time spent at the site was around 5.23 minutes, the most frequent time spent was 1 minute.

The activity statistics for this day are:  
11 individuals walking alone;  
8 individuals walking pass through;  
2 groups playing and sitting;  
1 couple walking together; and  
1 individual sitting alone.

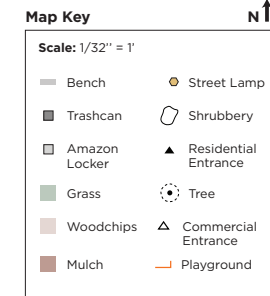


#	Quantity	P Age	P Gender	P Race	Time (min)	Activities
1	3	YC YC 30s	W M W	AAA	> 40	Hanging around/SG on phones on playground
2	2	YC 30s	M M	AA	> 40	Playing on playground/ST; playing with soccer ball on sidewalks
3	1	50s	W	A	1	WA; enter 230
4	1	30s	M	A	1	WPT
5	1	60s	W	A	1	WA; enter 230 to get package; enter 242
6	1	TN	M	A	8	Playing with ball with #2; WA; enter 248
7	1	20s	W	A	1	WPT
8	1	40s	W	A	1	WPT
9	1	60s	M	A	1	WPT with cart of boxes
10	1	20s	W	A	1	WPT
11	1	60s	W	A	1	Out 230; WA
12	1	60s	M	A	1	WA; enter 230
13	1	30s	W	A	1	WA; enter 230
14	1	60s	W	A	1	WA; enter 230
15	1	40s	W	A	14	WA up ramp; sitting; enter 248
16	1	40s	W	A	1	WPT
17	1	TN	M	A	1	Out 212; WA; enter and out laundromat (250); enter 212
18	1	60s	M	A	1	WPT
19	2	60s 20s	W W	AA	1	WT with bags; enter 230
20	1	50s	W	A	1	Out 230; WA
21	1	20s	W	A	1	WPT while eating
22	1	40s	M	A	1	Out 218; WA; enter 250
23	1	70s	W	A	UNK	SA on bench



### Behavioral Map #2

Monday, 11/6/23, 4:00-4:40pm  
48 Degrees (Cloudy, Windy)



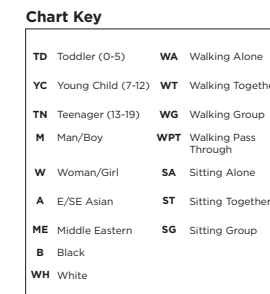
### Data Chart #2

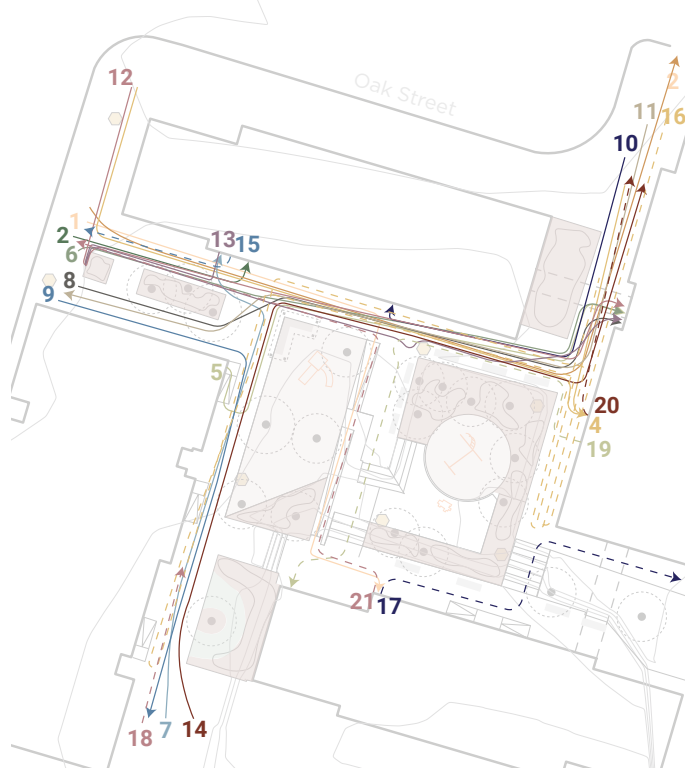
Tai Tung Village Playground

On Monday, there were over 28 individuals that visited the open space. Of these people, 56% were perceived as men/boys and 44% were perceived as women/girls. The average perceived age amongst all the people were those between 7-12 years of age. On this day, 75% of the population that visited the park were perceived as East/Southeast Asian, 19% were perceived as Middle Eastern, and 6% were perceived as White. While the average amount of time spent at the site was 3.75 minutes, the most frequent time spent was 1 minute.

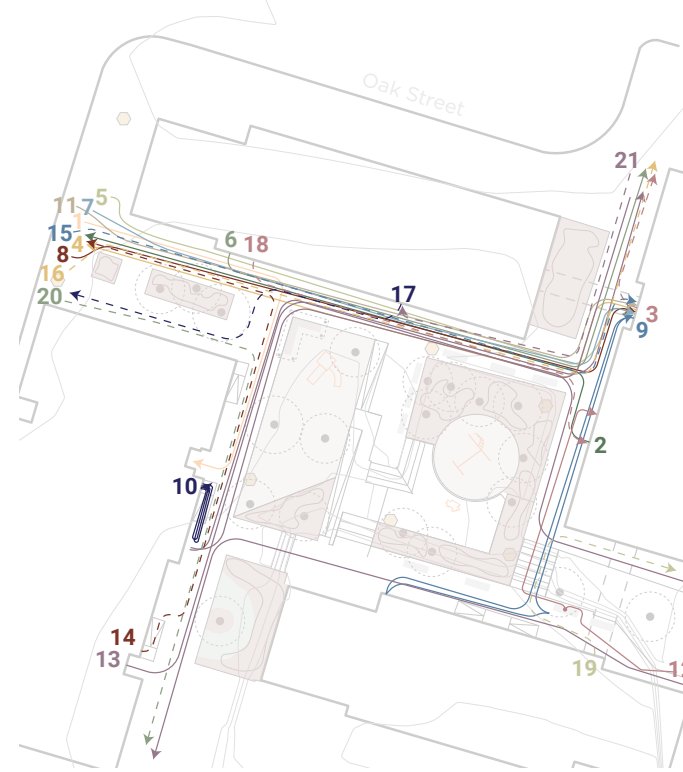
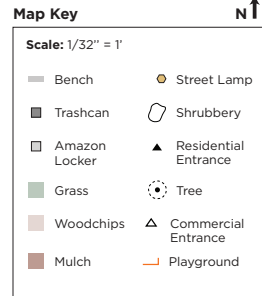
The activity statistics for this day are:  
9 individuals walking alone;  
1 group walking together;  
1 individual standing alone; and  
1 large group playing all around.

#	Quantity	P Age	P Gender	P Race	Time (min)	Activities
1	1	60s	W	A	2	WA; enter 230
2	1	50s	M	A	1	Out 234; WA
3	> 15	30s 30s 30s YC	W W M W/M	AA AA/WH	30	Playing all around area (both playgrounds); ball on sidewalk; adults sitting/standing
4	1	30s	W	A	1	WA; enter 218
5	1	60s	M	A	1	WA; enter 212
6	1	40s	M	A	3	Standing talking on phone
7	3	40s YC YC	W W M	ME ME ME	2	WG; enter 242
8	1	30s	M	WH	1	WA; enter 214
9	1	40s	M	A	1	WA; enter 232
10	1	40s	M	A	1	WA; enter 250
11	1	60s	M	A	1	WA; enter 230
12	1	20s	W	A	1	WA; enter 244

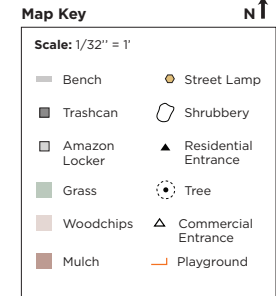




**Behavioral Map #3**  
 Wednesday, 11/8/23, 10:45-11:15am  
 41 Degrees (Frigid, Windy)



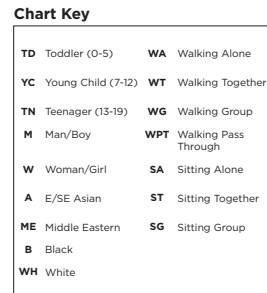
**Behavioral Map #3**  
 Wednesday, 11/8/23, 10:45-11:15am  
 41 Degrees (Frigid, Windy)



**Data Chart #3**  
 Tai Tung Village Playground

On Wednesday, there were a total of 46 individuals that visited the open space. Of these people, 56% were perceived as women/girls and 44% were perceived as men/boys. The average perceived age amongst all the people were those between 0-5 years of age. On this day, 81% of the population that visited the park were perceived as East/Southeast Asian, 15% were perceived as White, and 4% were perceived as Black. While the average amount of time spent at the site was around 4.61 minutes, the most time frequent spent was 1 minute.

The activity statistics for this day are:  
 8 individuals walking alone;  
 6 individuals walking pass through;  
 3 couples walking together; and  
 2 group walking together.

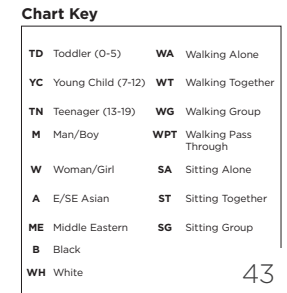


#	Quantity	P Age	P Gender	P Race	Time (min)	Activities
1	1	70s	W	A	1	WPT
2	2	30s 30s	M M	WH WH	1	WT; construction people; out 216
3	1	40s	M	A	1	WPT
4	13	20s 20s TD	W W W/M	A A A/WH	8	WG; 3-4 year olds on a rope; walked around the building, came back; enter day care (236)
5	1	30s	M	A	4	WA; enter 252; out and enter 230
6	2	70s 70s	M M	A A	2	WT; looked at building; enter 230
7	2	40s 40s	M M	WH WH	1	WT; construction people; enter 212
8	1	40s	M	A	1	WA with bags; enter 230
9	1	60s	W	A	1	WPT with grocery cart
10	1	40s	W	A	1	WA; enter 218
11	1	40s	W	A	1	WPT; tossed trash in garbage can
12	2	50s 50s	W W	A A	23	Chatting at entrance; 1 person left after 15 min; stood outside 252; enter 230
13	1	60s	W	A	6	Out 216; chatting with #12; WA; tossed trash in garbage can; enter 230
14	1	40s	M	B	1	WPT; construction person
15	1	50s	W	A	1	WA; out 218; waved to #12 and #16
16	1	70s	W	A	> 15	WA; waved to #15; kept looping around the sidewalks; chatting to #12 and #18
17	1	60s	M	A	1	WA; out 248
18	1	60s	W	A	22	Walking to #12 and exchanged bags; chatting
19	1	60s	M	A	2	Out 234; WA; enter 250
20	10	30s 30s TD	W W W/M	A A A/WH	2	Out 236; WG; toddlers on rope - going to Tai Tung Park
21	1	40s	W	A	2	WPT; up ramp

**Data Chart #4**  
 Tai Tung Village Playground

On Friday, there were a total of 27 individuals that visited the open space. Of these people, 56% were perceived as women/girls and 44% were perceived as men/boys. The average perceived age amongst all the people were those between 40-49 years of age. On this day, 93% of the population that visited the park were perceived as East/Southeast Asian and 7% were perceived as White. While the average amount of time spent at the site was around 2.38 minutes, the most frequent time spent was 1 minute.

The activity statistics for this day are:  
 13 individuals walking alone;  
 2 individuals walking pass through;  
 2 groups walking together;  
 2 individuals sitting together;  
 1 couple walking together; and  
 1 individual sitting alone.

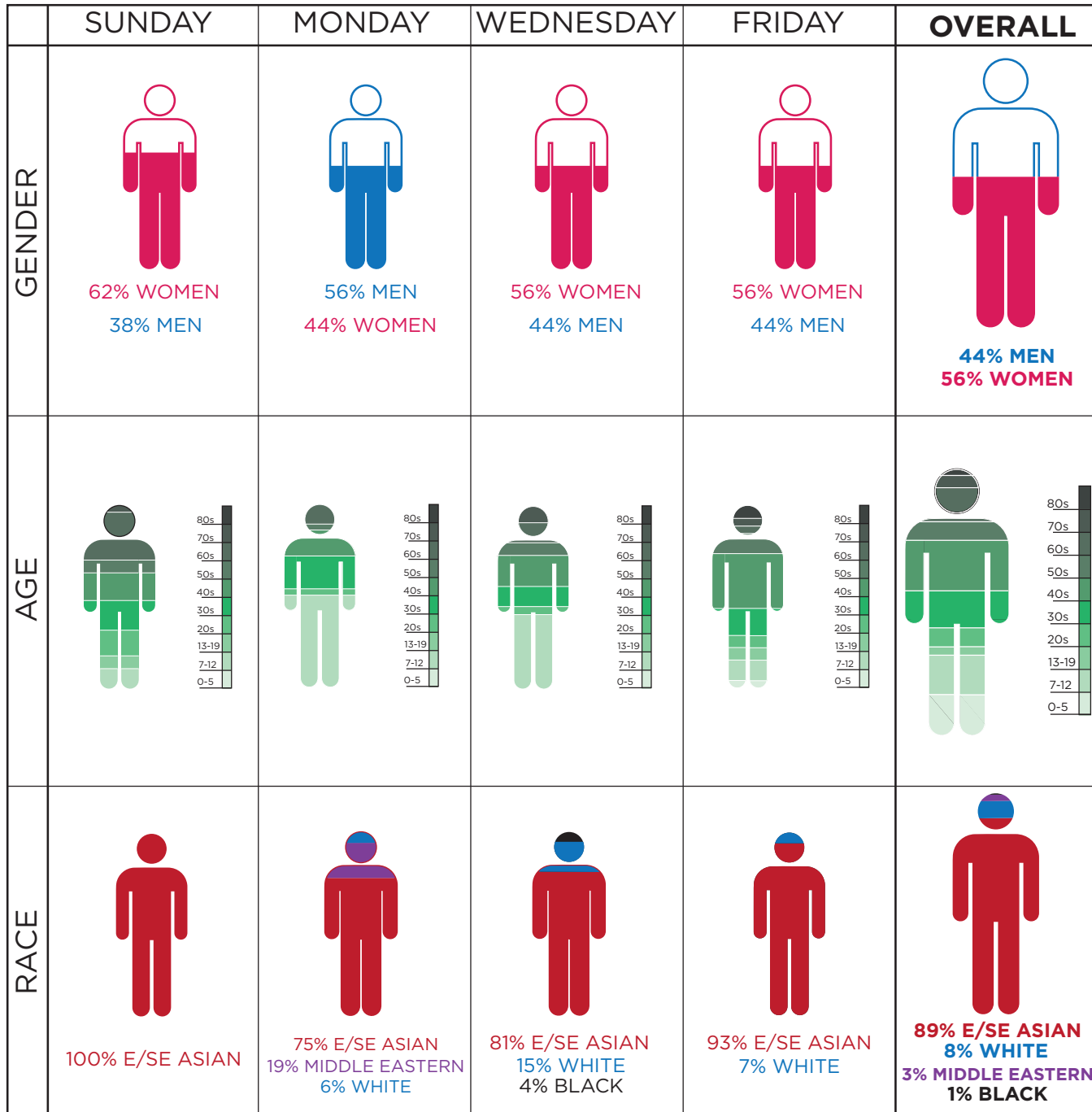


#	Quantity	P Age	P Gender	P Race	Time (min)	Activities
1	1	20s	M	A	1	WA with food; enter 254
2	1	40s	M	A	1	Out 234; WA
3	1	40s	W	A	1	Out 230; WA
4	1	40s	W	WH	4	WPT on phone; walked around buildings; pacing around
5	1	40s	W	A	8	WA; SA on bench; enter 230
6	1	60s	W	A	1	Out 214; WA
7	1	50s	W	A	1	WA; enter 230
8	1	40s	W	A	1	WA with bags; enter 230
9	1	20s	W	A	7	Out 230; enter and out 250; ST on bench; talking to #12; enter 230
10	1	30s	M	A	1	Out 256; brought out boxes for recycling on a cart, twice; enter 256, leaving boxes outside
11	1	70s	M	A	1	WA; enter 230
12	1	80s	W	A	6	WA very slowly; ST on bench talking to #9; enter 234
13	1	40s	M	A	7	Out 260 with trash cans; WA; came back with empty cans, took #10's boxes to recycle; repeat
14	3	YC TN 50s	M W W	A A A	1	Out 256; WG; teenager split up waking in other direction
15	1	80s	M	A	3	WA with walker; enter 230
16	1	40s	M	A	1	WA with gym bag; talking with #15; enter 230
17	1	30s	M	WH	1	WPT; construction person
18	1	30s	W	A	1	Out 214; WA; enter 236
19	1	50s	M	A	1	Out 242; WA
20	2	TN 40s	W W	A A	1	WT carrying groceries
21	4	TD YC YC 30s	M M W W	A A A A	1	WG; enter 218

# Demographics

Tai Tung Village Playground  
236 Harrison Ave

Using our compiled data we analyzed the perceived demographics of the users who visited the space for each day, as well as combining the data to generate overall statistics. This data is shown to the left.



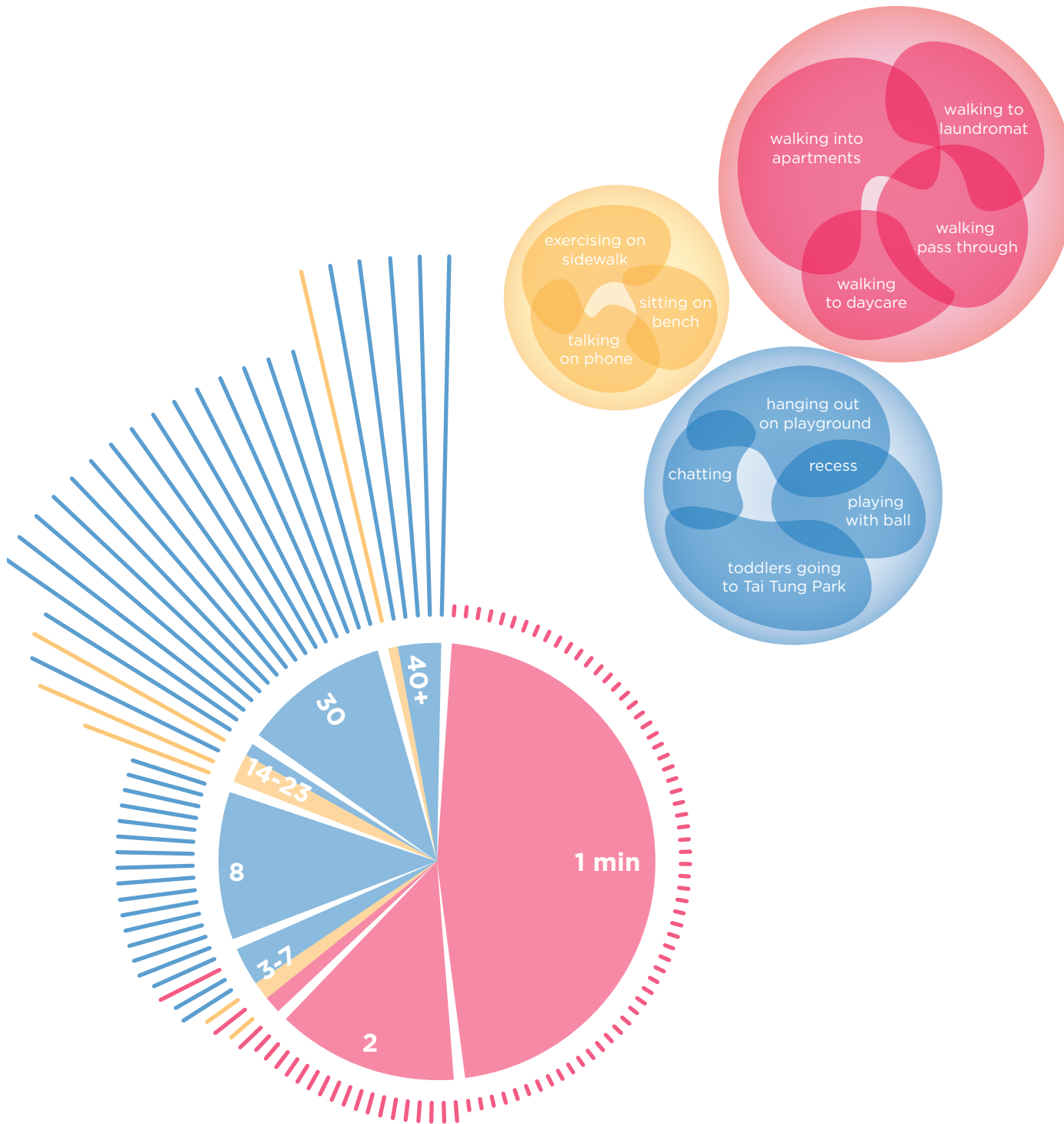


# Types and Duration of Activity

Tai Tung Village Playground  
236 Harrison Ave

The radial histogram analyzes the ways people use Tai Tung Village Playground and how the types of uses can influence how much time people spend in the spaces. Through conceptually categorizing the types of activities as necessary, optional, and social, we can see that those who use the space for necessary activities spend much less time in the area compared to those using the space for social activities. Those using the space for optional activities have more of a variation in how long they stay compared to that of necessary or social uses.

Tai Tung Village Playground is used as a space for children to play during day care hours and for after-school programs. These social activities lasted around 30 minutes. The necessary activities at this space are often between 1-2 minutes. These are people passing through the area, walking to their apartment, or toddlers from the day care on their way to Tai Tung Park.



## Key

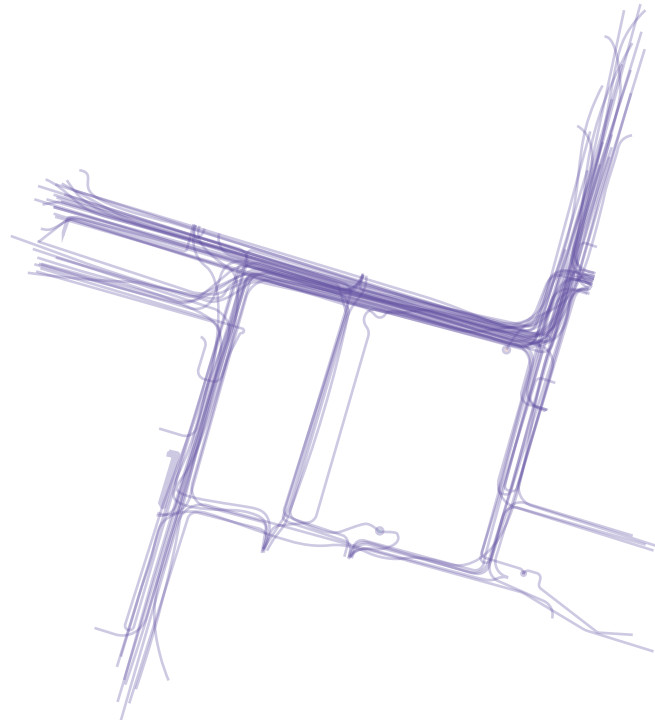
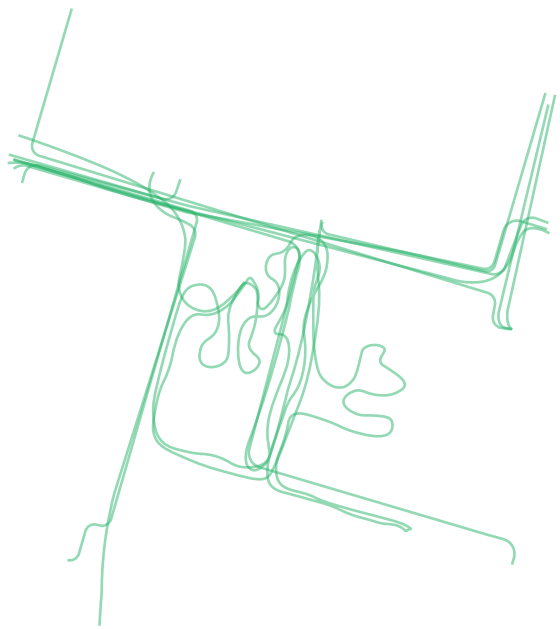
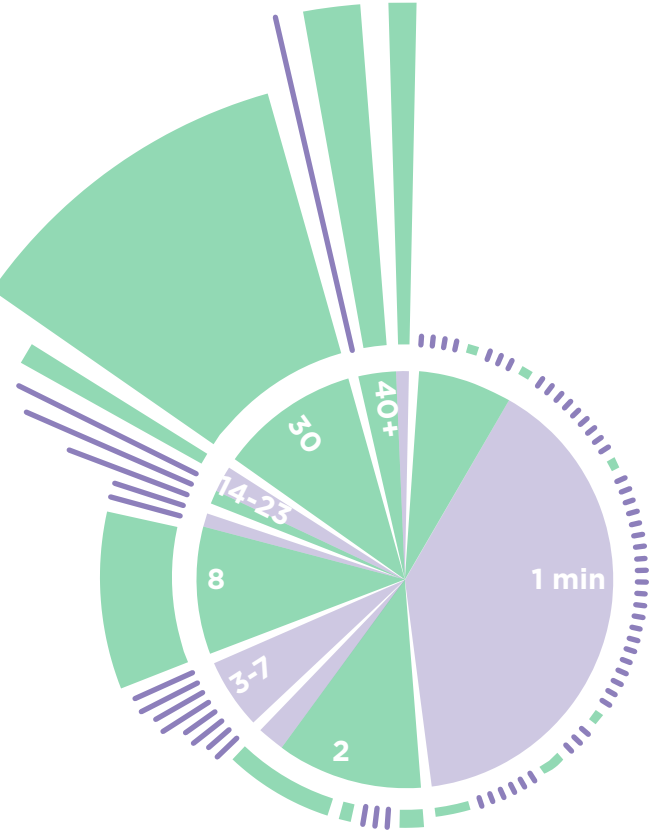
### Type of Use:

- Necessary
- Optional
- Social

# Group and Individual Users

Tai Tung Village Playground  
236 Harrison Ave

The radial histogram analyzes whether people who visit the park do so in groups or individually. In total we observed 14 groups (consisting of 65 individual people), and 63 individual users. The maps on the side reflect these different user paths.



## Key

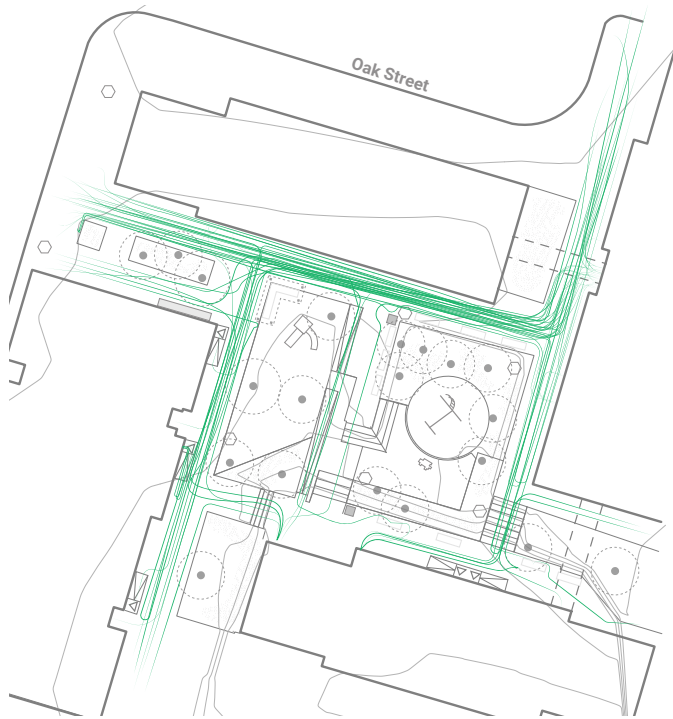
### Type of User:

Groups

Individuals

# Residential vs. Non-Residential

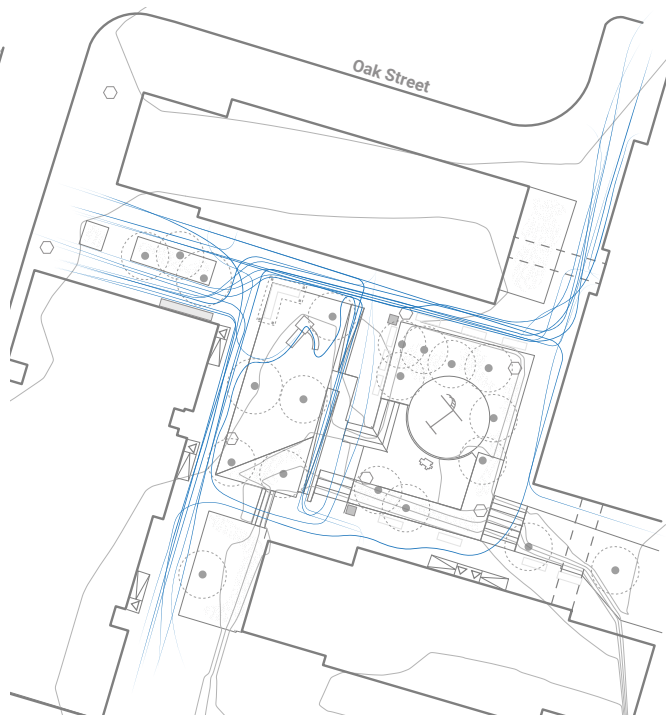
Tai Tung Village Playground  
236 Harrison Ave



47%

## RESIDENTIAL USERS

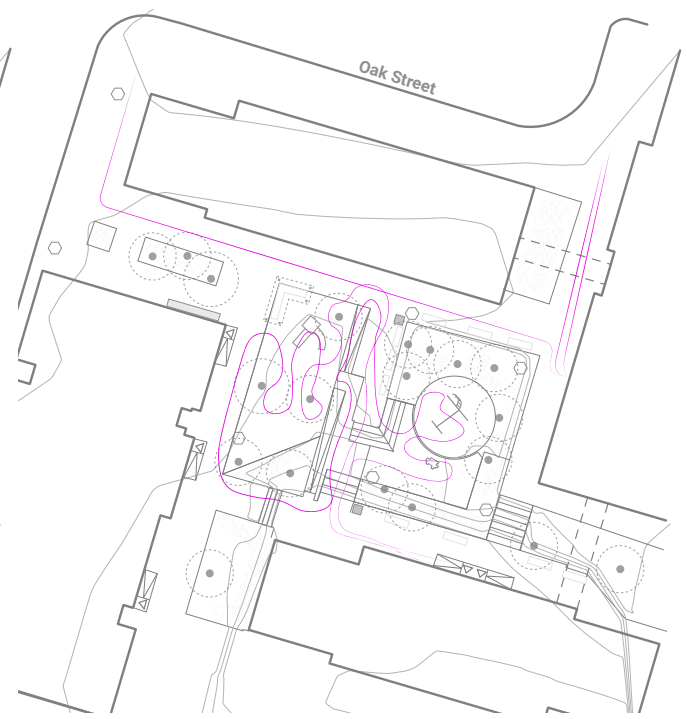
map of all paths which go into or out of a residence, residents account for 47% of open space users we observed



23%

## NON-RESIDENTIAL USERS

map of users who do not enter/exit residences, non-residents account for 23% of open space users we observed



30%

## CHILDCARE USERS

map of users who came from/to the park from a childcare group, these users account for 30% of the open space users we observed

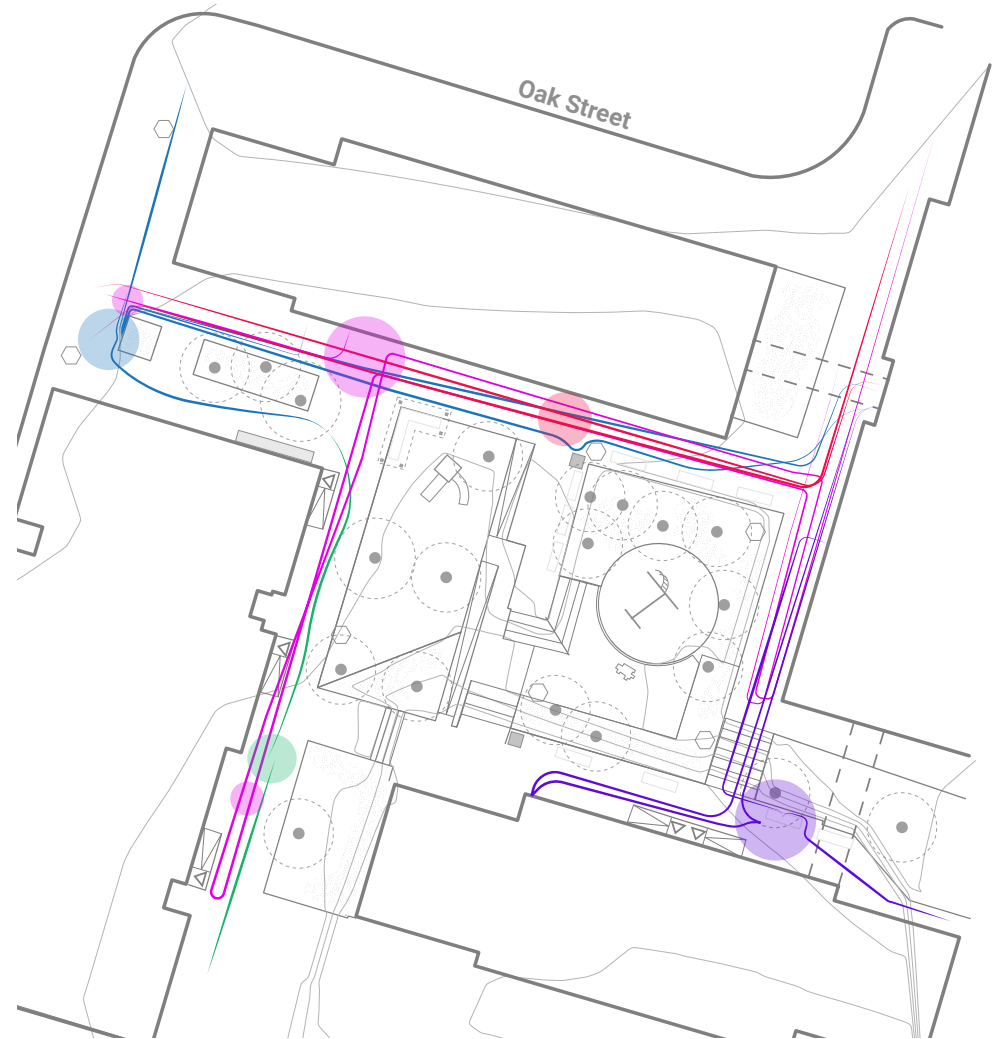
# Paths, Nodes and Chance Interactions

Tai Tung Village Playground  
236 Harrison Ave



## PATHS + NODES

paths (lines) show the most common routes taken through the park nodes (circles) show the most common intersections



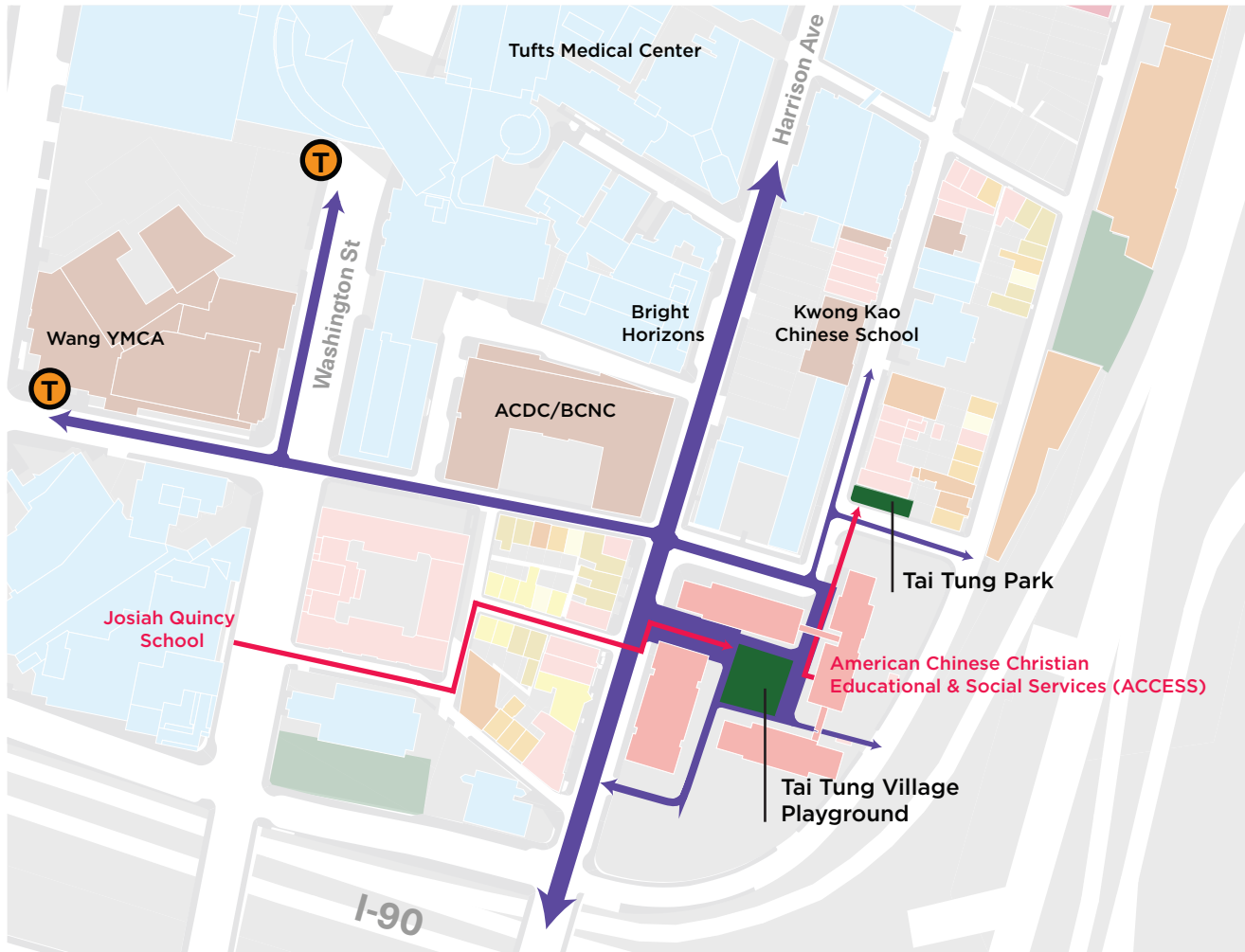
## CHANCE INTERACTIONS

as the park is in the middle of a residential complex, we noticed people saying hi to one another as they passed. we noted these individuals, and noted these meeting points, most often they occurred at the nodes we call out in the drawing to the left

# Area Map and Connections

Tai Tung Village Playground  
236 Harrison Ave

This area map shows connections to neighboring transit stations, parks, schools and other institutions. From our observations of Tai Tung Village Playground we drew conclusions about where visitors maybe be coming from or going to.



## Key

### Type of Connection:

- Transit Stops and adjacent institutions
- After-school and day care programs